

2019

NANAIMO'S

VitalSigns®

Nanaimo's Community Check-up



Your fund. Your cause. Your legacy.

nf Nanaimo
Foundation



Vital Signs

Vital Signs® is a community check-up conducted by community foundations across Canada that measures the vitality of our communities and identifies trends across a range of local issues. Vital Signs is coordinated nationally by Community Foundations of Canada.

The Nanaimo Vital Signs report compiles the most recent local data and research, allowing us to understand the current well-being of our community and identify opportunities for action.

Most of the analysis in this Vital Signs report is for the Nanaimo urban area (Nanaimo Census Agglomeration) geography, unless otherwise specified. Comparisons are made over time periods and with other urban areas (other Census Metropolitan Areas and Census Agglomerations).

The full source document can be downloaded from:
www.nanaimofoundation.com/vital-signs

In the spirit of reconciliation, we acknowledge that we are situated on the traditional territory of the Snuneymuxw First Nation. We are grateful to have the opportunity to live, work and play in this community, on this territory.

Contents

| | |
|---------------------------|----|
| Nanaimo | 3 |
| Safety and Security | 7 |
| Arts and Culture | 8 |
| Gap Between Rich and Poor | 9 |
| Health and Wellness | 10 |
| Learning | 11 |
| Housing | 13 |
| Economy | 15 |
| Environment | 17 |
| Getting Around | 19 |
| Belonging and Leadership | 21 |

A special thank you to our Vital Signs partners, whose collaboration and generous financial support has made this initiative possible.

Presenting Sponsor

IslandSavings

A DIVISION OF FIRST WEST CREDIT UNION

Community Sponsors



Nanaimo Foundation

The Nanaimo Foundation is
YOUR community foundation.

We inspire giving, support our local charitable sector, and build permanent endowments to address the current and future needs of our community.

The Nanaimo Foundation helps donors simplify and enhance their charitable giving in Nanaimo and across Canada. We are connected to our community, and help amplify the impact of donations of all sizes through collaboration and strategic granting.

We work with donors to build their own legacies, and carry out their charitable wishes in perpetuity.

At the Nanaimo Foundation we steward the gifts of energy, ideas, time, and money to make meaningful and lasting impacts in our community.

Connect with your community foundation

Laurie Bienert • Executive Director

250-667-4292 | laurie@nanaimofoundation.com
www.nanaimofoundation.com

Your fund. Your cause. Your legacy.

Board of Directors

2019–2020

George Hanson • *Chair*

Daniel Martinez • *Vice Chair*

Kristina Crowson

Mike Delves

Tim Mawdsley

Courtenay Ndiaye

Chelsea Wilson

Dave Witty

Vital Signs Fundholder's Circle

Thank you to our fundholders who have made special gifts to support our 2019 Vital Signs report:

Johnston Family Fund

Ted & Darlene Carson Fund

When you create a donor advised fund through the Nanaimo Foundation, you have the opportunity to benefit charitable needs now — and forever — with a permanent endowment. Your gift is invested over time. Earnings from your fund are used to make grants addressing the causes that matter most to you.

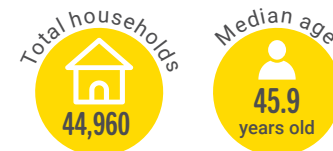
NANAIMO

BRITISH COLUMBIA

Nanaimo was first inhabited thousands of years ago by the Snuneymuxw First Nations People who named the area "Sne-ney-mous," which means "meeting place." Nanaimo was dubbed the "Hub City" early in its history by the Vancouver Island Development League because of its central location on Vancouver Island.

Population of Nanaimo

2016 Census Information



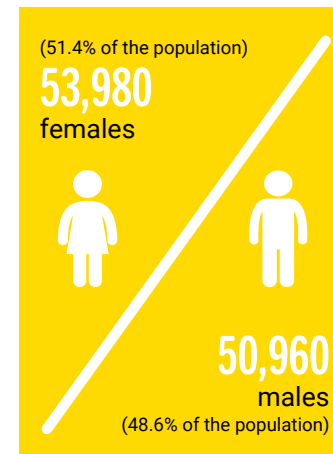
Diversity in Nanaimo

There were 8,265 Aboriginal residents, (based on Aboriginal Identity), which composed 8.1% of the population.

The Aboriginal population increased at a much faster rate (56.1% increase) than the non-Aboriginal population (9.0% increase) between 2006 and 2016.

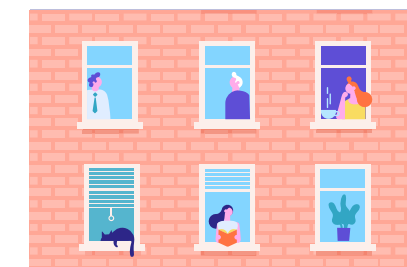
There were 9,280 Visible Minority residents, composing 9.1% of the population.

The Visible Minority population increased at a much faster rate (39.9% increase) than the non-Visible Minority population (9.5% increase) between 2006 and 2016.



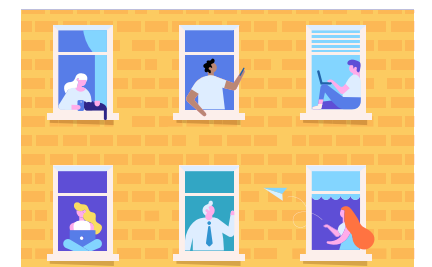
POPULATION AGE

| age | | change 2006-2016 |
|-------|-------|------------------|
| 0-19 | 19.7% | -2.6% |
| 20-39 | 23.5% | 0.5% |
| 40-59 | 27.1% | -4.2% |
| 60-79 | 24.0% | 5.6% |
| 80+ | 5.8% | 0.7% |



HOUSEHOLD TYPES

| | |
|--------------------------|-------|
| Couples without children | 31.7% |
| One person | 29.6% |
| Couples with children | 21.5% |
| Lone-parents | 10.3% |
| Roommate households | 5.3% |
| Multiple family | 1.6% |



TOP 5 LANGUAGES SPOKEN AT HOME

| | |
|----------|-------|
| English | 95.9% |
| Mandarin | 0.8% |
| Punjabi | 0.5% |
| French | 0.5% |
| Korean | 0.3% |

POPULATION 2016
104,936 residents

1,940.2 hours of sunshine annually

CLIMATE AVERAGES
1981-2010

175.6 days of precipitation annually

1,165.4 mm of precipitation annually



68.7 cm or 11 days of snow annually



Summer Average (JUN - AUG)



Winter Average (DEC - FEB)

Population Growth

6,915 new residents
up 7.1%
2011-2016

For 2 out of the 5 past years, migration from other parts of Canada was the main contributor to population growth.

For 3 out of the 5 past years, migration from other parts of B.C. was the main contributor to population growth.

Components of Population Growth

| | 2013-2014 | 2014-2015 | 2015-2016 | 2016-2017 | 2017-2018 |
|--------------------------------------|-----------|-----------|-----------|-----------|-----------|
| Natural growth | -139 | -114 | -143 | -209 | -211 |
| International migration | 430 | 300 | 215 | 590 | 563 |
| Migration from other parts of Canada | 443 | 799 | 955 | 754 | 521 |
| Migration from other parts of B.C. | 464 | 327 | 334 | 800 | 1,041 |
| Net population growth | 1,198 | 1,312 | 1,361 | 1,935 | 1,914 |

Immigrants 2016

(from any period of immigration)

TOP FIVE COUNTRIES

| | |
|----------------|-------|
| United Kingdom | 28.1% |
| USA | 8.5% |
| Germany | 6.2% |
| India | 5.9% |
| China | 5.6% |

14,915 Immigrants
14.6% of the population

Recent Immigrants

(arriving between 2011 and 2016)

TOP FIVE COUNTRIES

| | |
|----------------|-------|
| Philippines | 20.7% |
| China | 19.6% |
| United Kingdom | 8.1% |
| India | 7.7% |
| USA | 7.0% |

1,355 recent Immigrants
1.3% of the population

Both children and youth (0-19 years old) and seniors (65+ years old) populations are projected to grow more quickly than the overall population from 2019 to 2039.

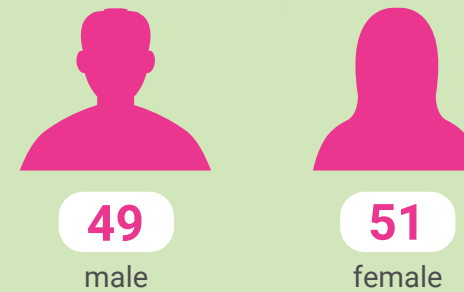
Population projections for Nanaimo Regional District

| | Total population 2019 | Total population 2039 | Projected change |
|------------------|-----------------------|-----------------------|------------------|
| Total population | 164,546 | 200,739 | 22.0% |
| 0-19 years old | 27,345 | 35,659 | 30.4% |
| 65+ years old | 46,221 | 62,655 | 35.6% |

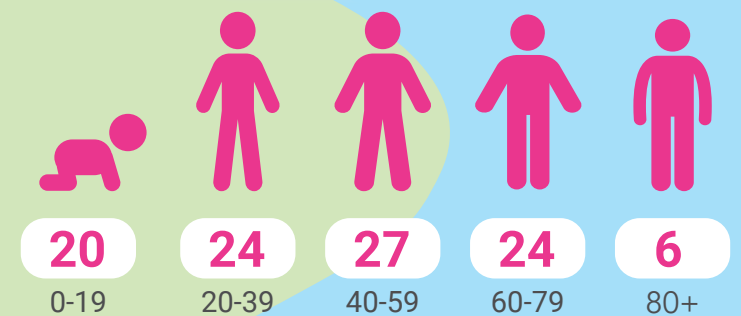
2016

If Nanaimo were a village of 100 people

Gender



Age



median age: 45.9 years



10

completed less than high school (aged 25-64)



29

have only high school diploma (aged 25-64)



61

have post-secondary degrees (aged 25-64)



6

receive low-income assistance



26

spend 30% or more of their income on housing



78

are employed (aged 25-64)

Diversity



82

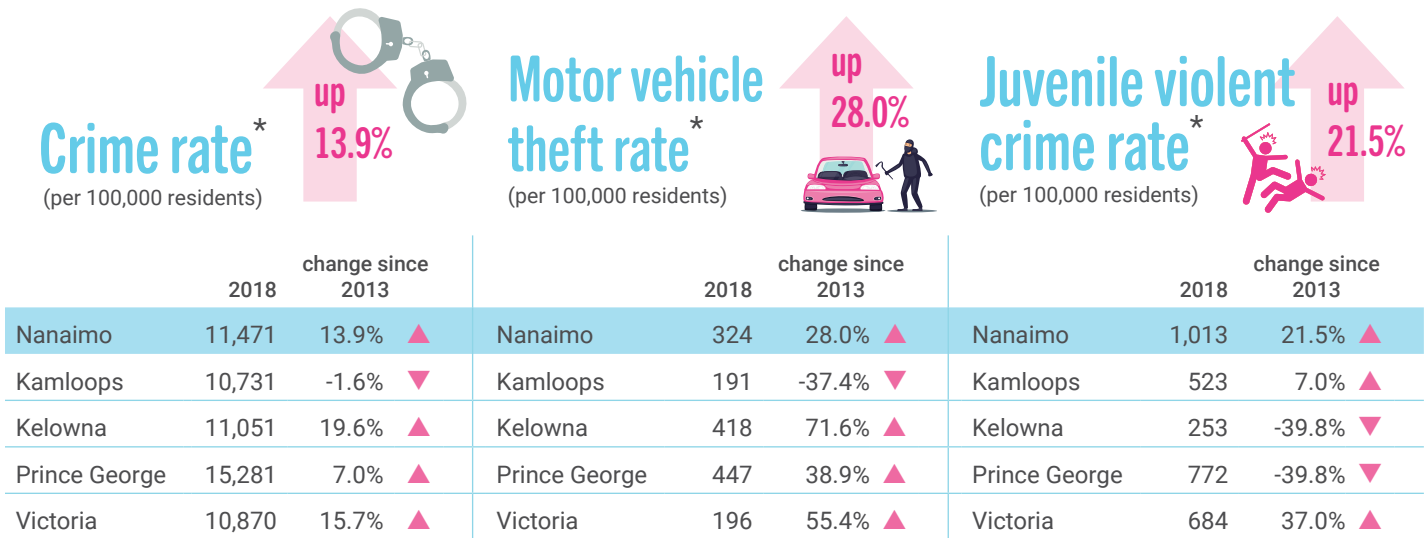
have a family doctor



11

Crimes committed in the village
—
crime rate per 100,000 residents 2018

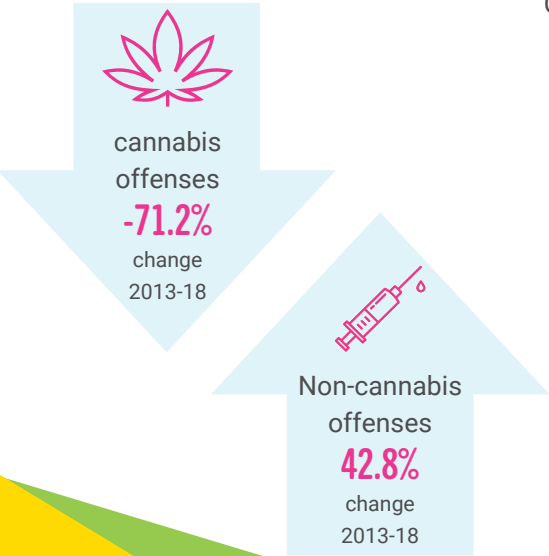
Safety and Security



* based on police service areas for these cities

Drug Offenses

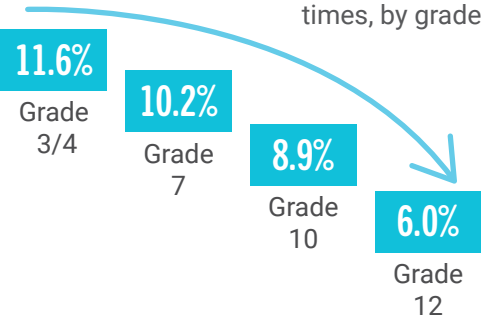
In the first 9.5 months of 2018 (pre cannabis legalization), Nanaimo RCMP (Municipal) recorded 128 cannabis offenses, whereas just three cannabis offenses were recorded in the final 2.5 months of 2018 (post cannabis legalization).



Bullying

Nanaimo-Ladysmith School District, 2015-16

Percentage of students bullied, teased or picked on many times, by grade



on average,
9.7%
students said that they were bullied, teased or picked on many times

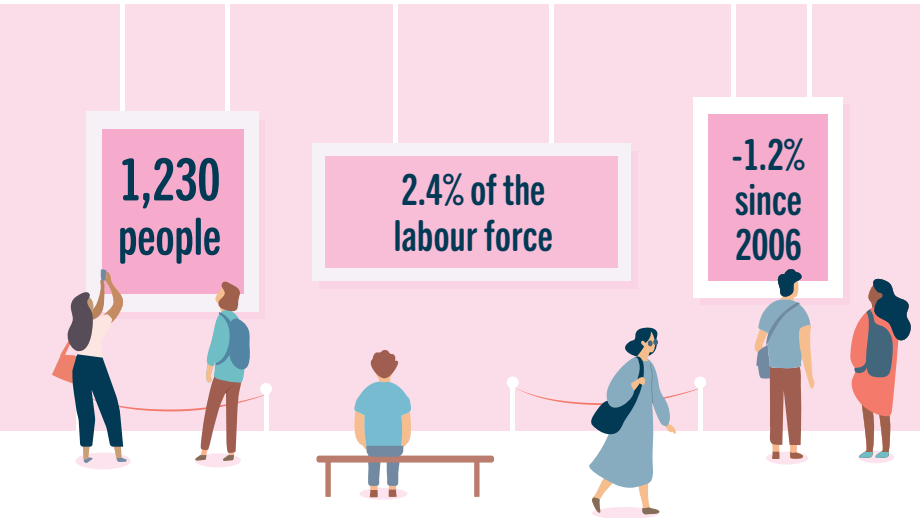


Children in care

The number of children (0-18 years old) in government care in the Nanaimo Local Health Area was very similar in both 2012 (15.1 per 1,000 children) and 2017 (15.3 per 1,000 children).

Arts and Culture

Number of persons working in the arts, culture and film industries 2016



Nanaimo Museum 2018
61,801 visits

Port Theatre 2018
281 events
106,562 patrons

Library items circulated by branch 2018

| | |
|--|---------|
| Nanaimo North | 345,795 |
| Nanaimo Wellington | 170,100 |
| Nanaimo Harbourfront | 199,282 |
| OverDrive eBook & eAudioBook checkouts | 68,480 |

44,049 patrons
attended programs at the Nanaimo branches of the Vancouver Island Regional Library in 2018.

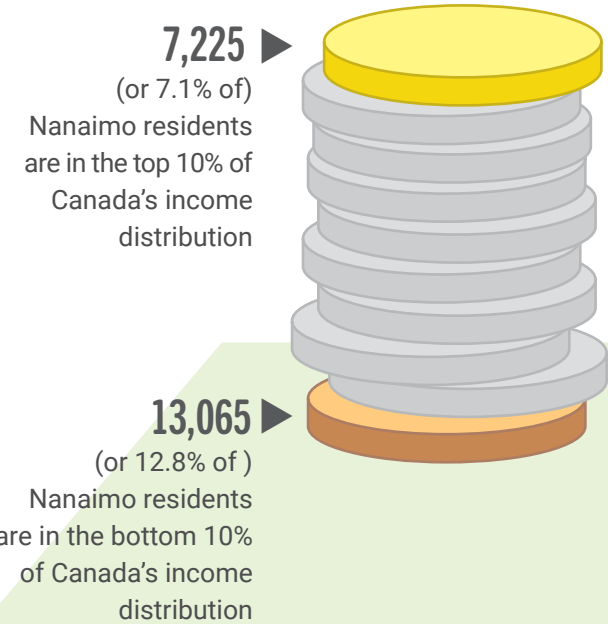
Public art installations
In 2018, there were 166 public art projects in the City of Nanaimo's inventory.

49 different festivals and events
listed in the Tourism Nanaimo brochure for the April 2019–March 2020 period.

Gap Between Rich and Poor

Income inequality

2016

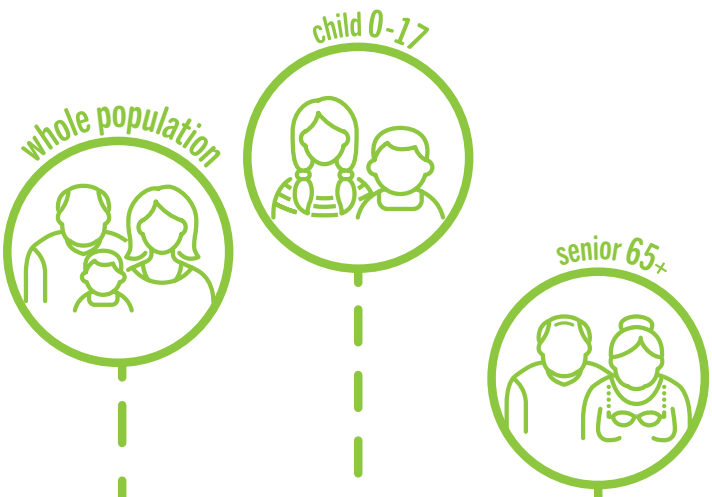


Income assistance

In 2018, there were **7,092 people** on average (based on monthly averages) receiving income assistance in the Nanaimo Census Agglomeration, composing 6.3% of the population.

Low-income rates

2017



| Nanaimo | 17.3% | 22.1% | 11.5% |
|---------------|-------|-------|-------|
| Kamloops | 15.2% | 17.5% | 11.5% |
| Kelowna | 15.0% | 17.0% | 11.0% |
| Prince George | 15.5% | 19.2% | 12.2% |
| Victoria | 14.0% | 15.1% | 10.9% |

There were **910 more** people living in poverty in 2017 than in 2012

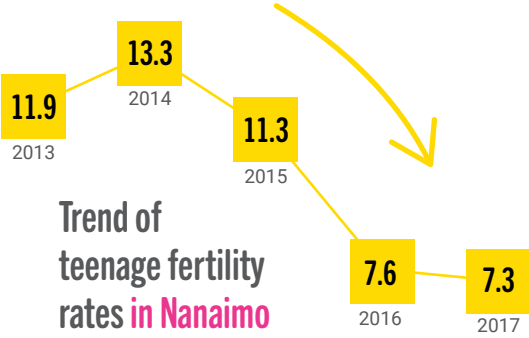
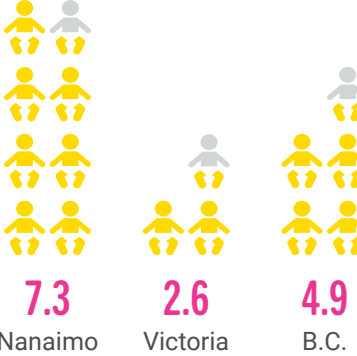
There were **600 fewer** children and youth living in poverty in 2017 than in 2012

There were **1,430 more** seniors living in poverty in 2017 than in 2012

Health and Wellness

Teenage fertility rate

per 1,000 women 15-19 years old, 2017



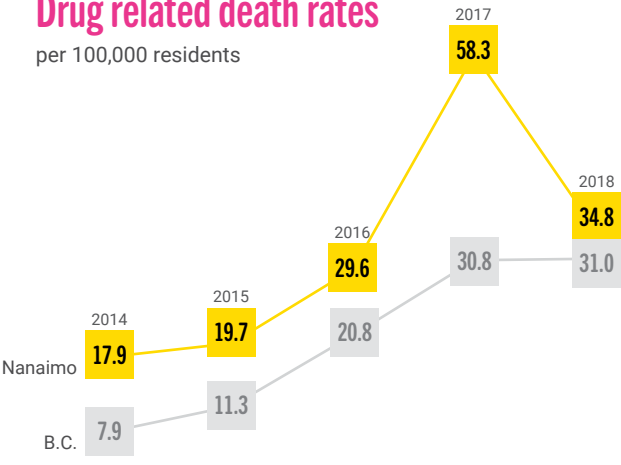
In 2017, **81.8%** had a family doctor compared to 83.0% in 2008

Needle pick-ups

In 2018, there were 1,232 needles picked-up in clean-ups in Nanaimo, including 1,219 needles in general urban areas and 13 needles on parks and trails.

Drug related death rates

per 100,000 residents



In 2017 and 2018, 76% of people who died of illicit drug overdoses were male, while 24% were female. 47% of people who died of illicit drug overdoses during this period were under 40 years old, while 53% were 40 years old or older.

Top five most common chronic diseases

2017

- 1** Mood and anxiety disorders—**33.1%**
- 2** Depression—**25.5%**
- 3** Hypertension—**20.8%**
- 4** Asthma—**13.5%**
- 5** Osteoarthritis—**9.3%**

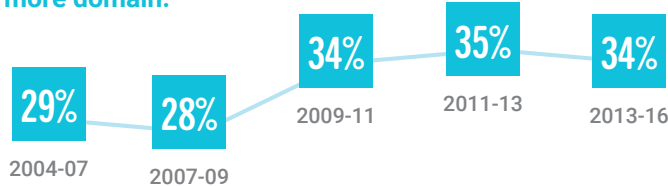
Learning

Vulnerability of kindergarten students

Nanaimo-Ladysmith School District

The Early Development Instrument (EDI) measures five core areas of early child development that are known to be good predictors of adult health, education and social outcomes: Physical Health and Well-Being, Language and Cognitive Development, Social Competence, Emotional Maturity, and Communication Skills and General Knowledge.

Percentage of kindergarten students measuring vulnerable in one or more domain.



Public and independent school enrolment

| | Public schools | Independent schools |
|---------|----------------|---------------------|
| 2018-19 | 14,865 | 993 |
| 2017-18 | 14,815 | 919 |
| 2016-17 | 14,319 | 828 |
| 2015-16 | 14,015 | 779 |
| 2014-15 | 14,589 | 706 |

Public school data is for Nanaimo-Ladysmith School District public schools

Vancouver Island University



Credentials

2017-2018

| | |
|---|-------|
| Graduate and first professional degrees | 465 |
| Bachelors degrees | 870 |
| Diplomas | 410 |
| Certificates | 1,105 |
| Developmental credentials | 875 |
| Total credentials awarded | 3,725 |

Full-time equivalent enrolment

| | |
|-----------------------------|-----------------------------|
| 7,010 students 2016/2017 | 7,212 students 2017/2018 |
|-----------------------------|-----------------------------|

Student body makeup

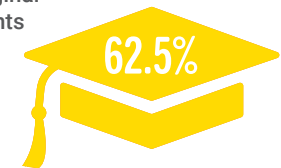
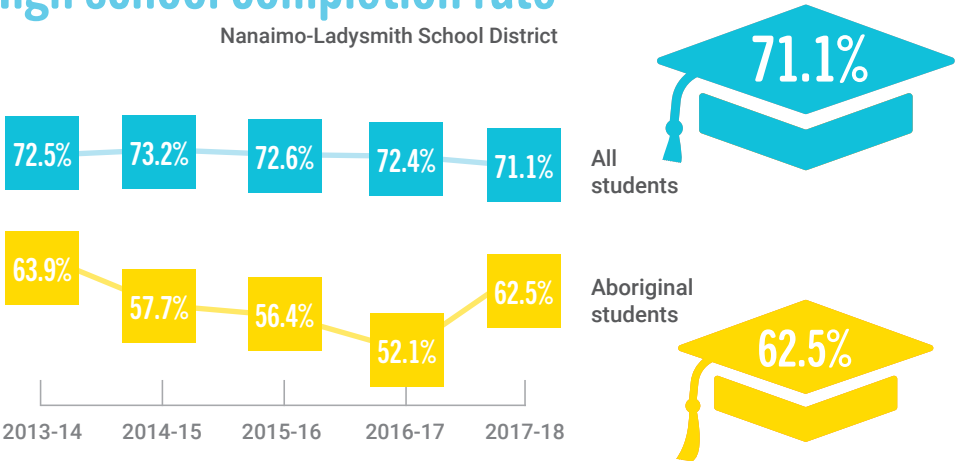
2017/18

74% domestic non-Indigenous
11% domestic Indigenous
15% international



High school completion rate

Nanaimo-Ladysmith School District



Highest education levels of working age population

(25-64 years old)

| | 2006 | 2016 |
|---|------------------|------------------|
| Less than high school | 6,505 or 13.2% | 5,455 or 10.0% |
| High school education | 13,065 or 26.5% | 15,510 or 28.6% |
| Trades, college or university education | 29,705 or 60.3% | 33,350 or 61.4% |
| Total | 49,275 or 100.0% | 54,320 or 100.0% |

Educational achievement increased between 2006 and 2016, more of the working age population completed high school or held a post-secondary certificate, diploma or degree.

Housing

Housing costs

The percentage of those in Nanaimo spending 30% or more of their before-tax household income on housing costs has dropped.

OWNER HOUSEHOLDS



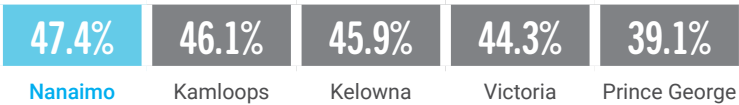
dropped from
21.8% in 2006 to
16.7% in 2016

RENTER HOUSEHOLDS

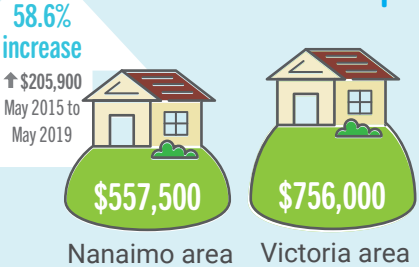


dropped from
48.2% in 2006 to
47.4% in 2016

Renters spending 30% or more



Single family house benchmark prices



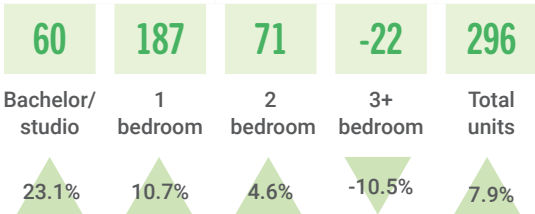
Apartment benchmark prices



Purpose-built rental housing

Inventory

Change October 2013–October 2018



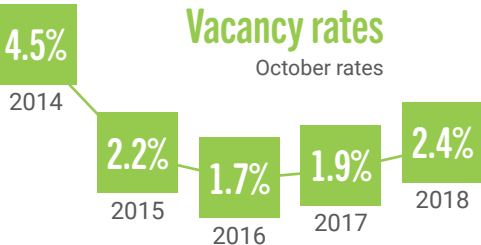
Median rents

Two-bedroom units, October 2018



Vacancy rates

October rates



Homeless count 2018

In 2018, Nanaimo participated in a nationwide Point-in-Time count through Service Canada's Homelessness Partnering Strategy, led locally by United Way Central & Northern Vancouver Island. Since the last count in 2016, Nanaimo's homeless population has nearly doubled.

| | Number of people | Percentage of homeless population |
|-------------|------------------|-----------------------------------|
| Unsheltered | 278 | 83.0% |
| Sheltered | 57 | 17.0% |
| Total | 335 | 100.0% |

| Percentage of homeless population | |
|-----------------------------------|-----|
| Male | 69% |
| Female | 30% |
| (0-24) | 6% |
| (55+) | 15% |
| Homeless at least one year | 53% |
| Aboriginal identity | 33% |

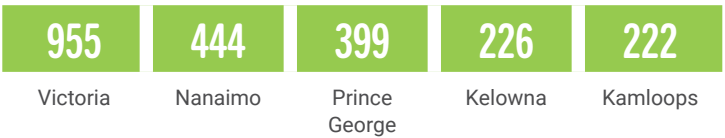
Social housing wait list

March 2019



Social housing wait list by community

March 2019



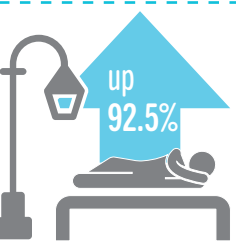
As of March 2019, Nanaimo had **444 applicant households** on the waitlist for subsidized housing.



Number of emergency shelter beds

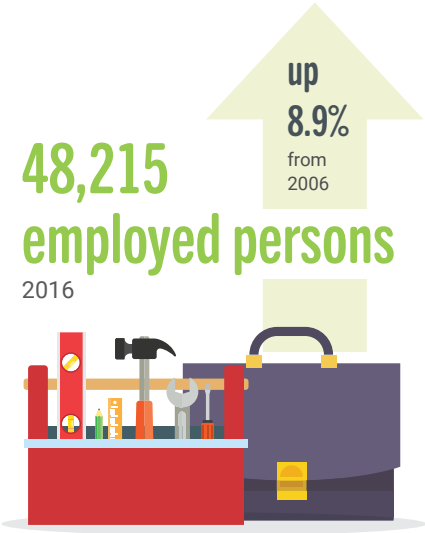
June 2019

| | |
|---|-----|
| Salvation Army New Hope Centre (Men) | 24 |
| Samaritan House (Women and Children) | 14 |
| First Unitarian Fellowship of Nanaimo Shelter (Men and Women) | 30 |
| St. Peter's Church (Men - Winter only) | 35 |
| Total | 103 |






up 92.5%
161 more people
February 2016–April 2018

Economy



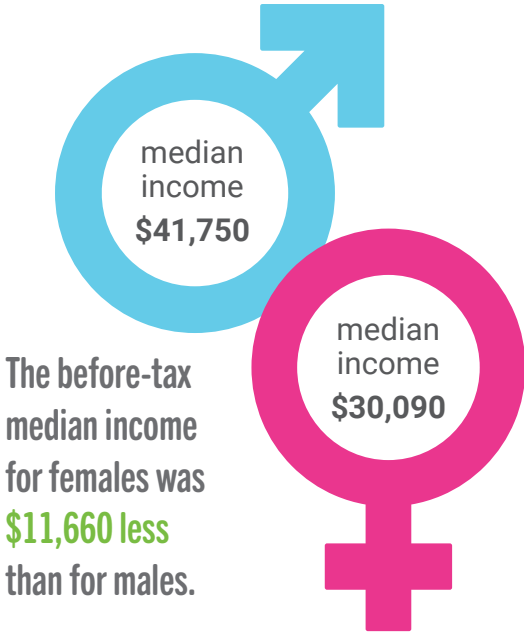
Top five industries 2016

| | | | | |
|---|---|-----------------------------------|-------|-------|
|  | 1 | Health care and social assistance | 7,515 | 14.7% |
|  | 2 | Retail trade | 7,380 | 14.4% |
|  | 3 | Construction | 4,645 | 9.1% |
|  | 4 | Accommodation and food services | 4,340 | 8.5% |
|  | 5 | Educational services | 3,470 | 6.8% |

Top ten employers 2018

| | | |
|----|-----------------------------------|-------|
| 1 | Nanaimo Regional General Hospital | 2,206 |
| 2 | School District #68 | 1,800 |
| 3 | Woodgrove Centre | 1,550 |
| 4 | Vancouver Island University | 1,030 |
| 5 | BC Ferries | 701 |
| 6 | City of Nanaimo | 639 |
| 7 | Shaw Cable | 600 |
| 8 | Coastal Community Credit Union | 600 |
| 9 | Nanaimo Forest Products | 340 |
| 10 | Costco Wholesale | 332 |

Male and female incomes 2017



Family median income

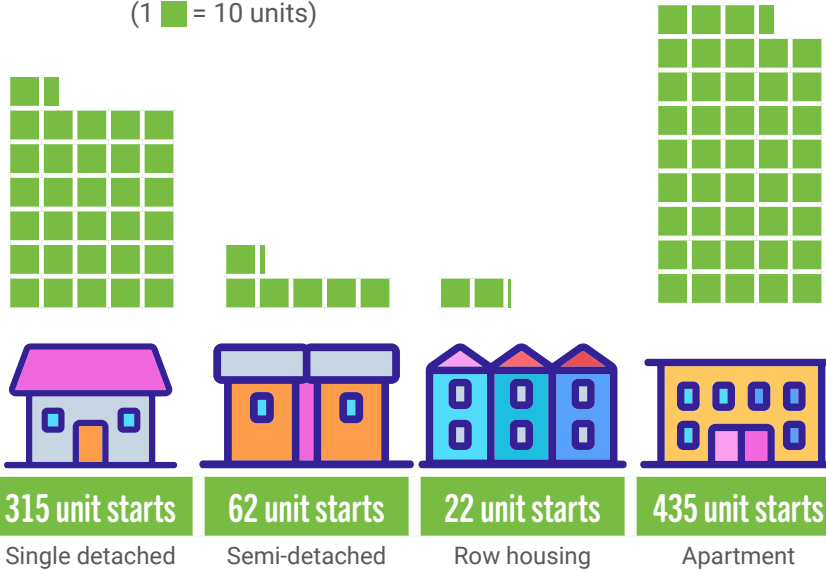
| | | |
|----------|----------|--------|
| \$69,390 | \$80,390 | 15.9% |
| 2012 | 2017 | Change |

Single median income

| | | |
|----------|----------|--------|
| \$25,840 | \$29,340 | 13.5% |
| 2012 | 2017 | Change |

Housing starts 2018

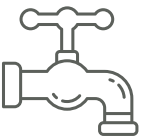
(1 ■ = 10 units)



In 2018, the City of Nanaimo issued **6,146 business licences**, or 83 more business licences than in 2017 (a 1.4% increase).



Environment



Water usage

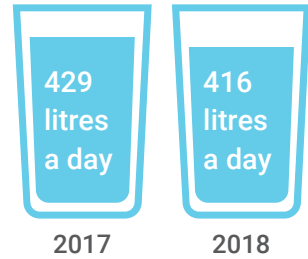
from 2004 to 2017

The City of Nanaimo had a 15% decrease ↓ in water consumption while population increased by 16% ↑

The RDN Water Service Areas had a 31% decrease ↓ in total water consumption.

Water consumption

City of Nanaimo, per capita

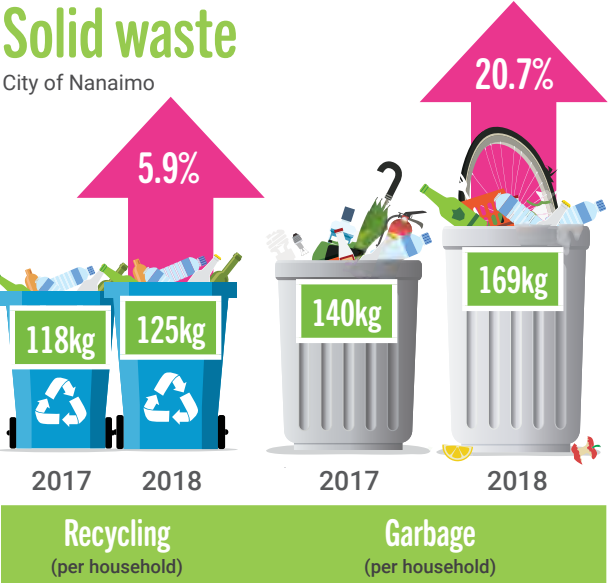


Water quality complaints

44 complaints in 2016
25 complaints in 2017
7 complaints in 2018

Solid waste

City of Nanaimo



Parks

Between 2015 and 2018, the City of Nanaimo's park system expanded by 213 hectares (a 24.6% increase), growing to 1,079 hectares in 2018.

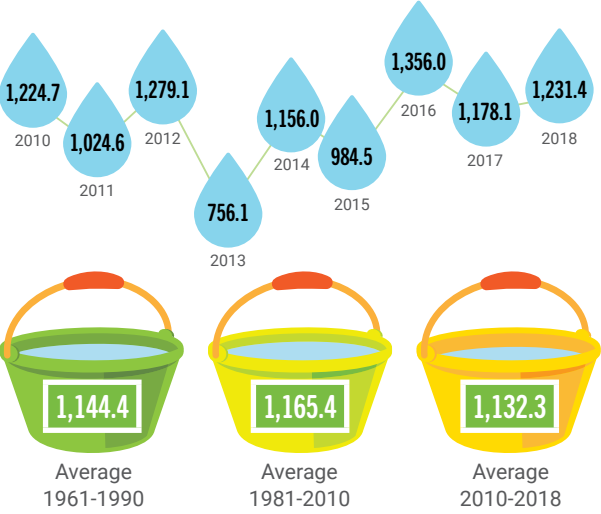
The Nanaimo Regional District added 11 hectares of regional parkland between 2015 and 2019, increasing to 2,072 hectares in 2019.

Environmental clean-up volunteers



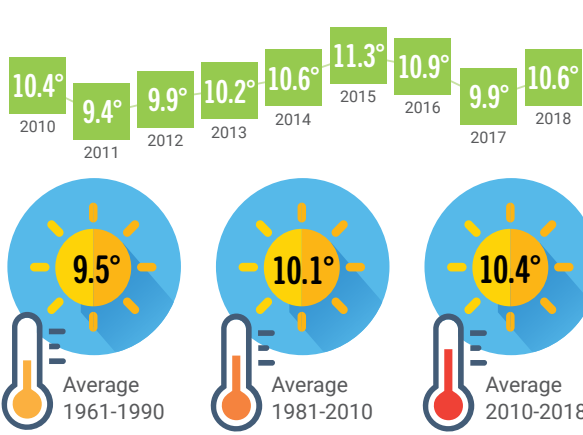
Total annual precipitation

(millimetres)



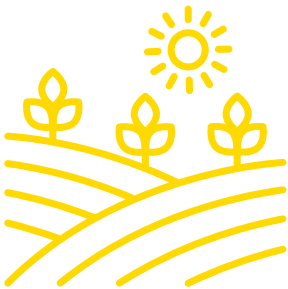
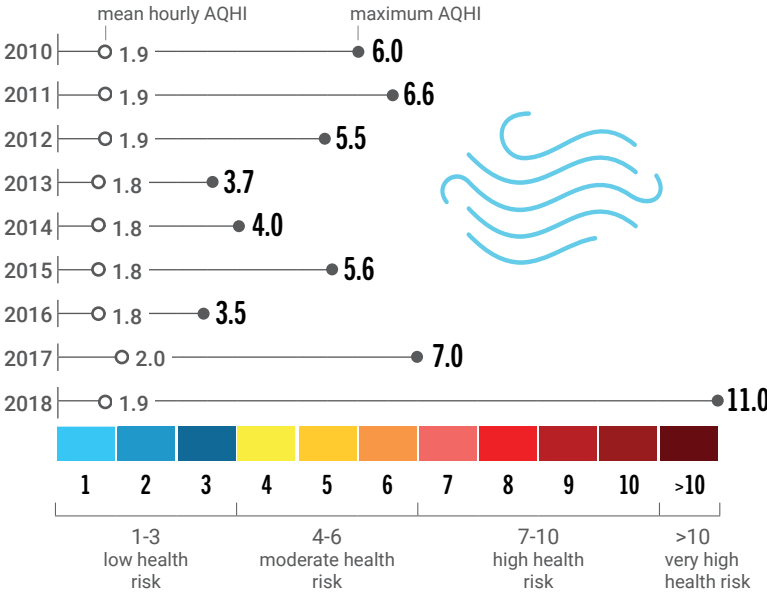
Average annual temperature

(degrees Celsius)



Air quality

Air Quality Health Index (AQHI)



Agricultural land

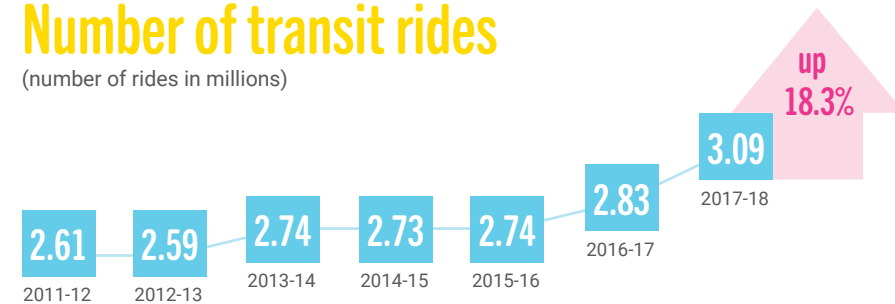
The amount of land in the Nanaimo Regional District in the Agricultural Land Reserve remained almost the same from 2015-2018, at approximately 18,785 hectares.

Getting Around



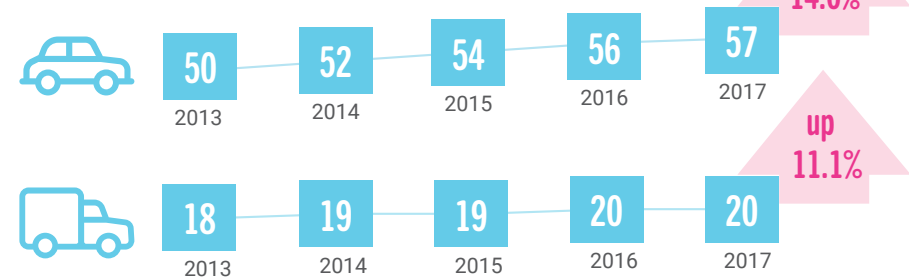
Number of transit rides

(number of rides in millions)

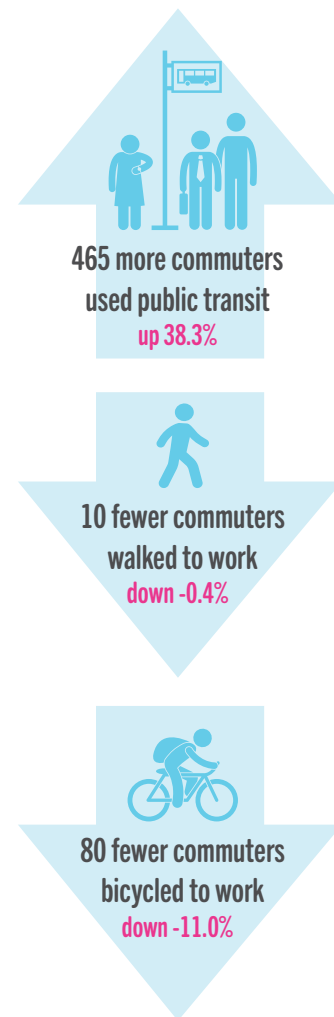


Commercial and passenger vehicles

(in thousands)



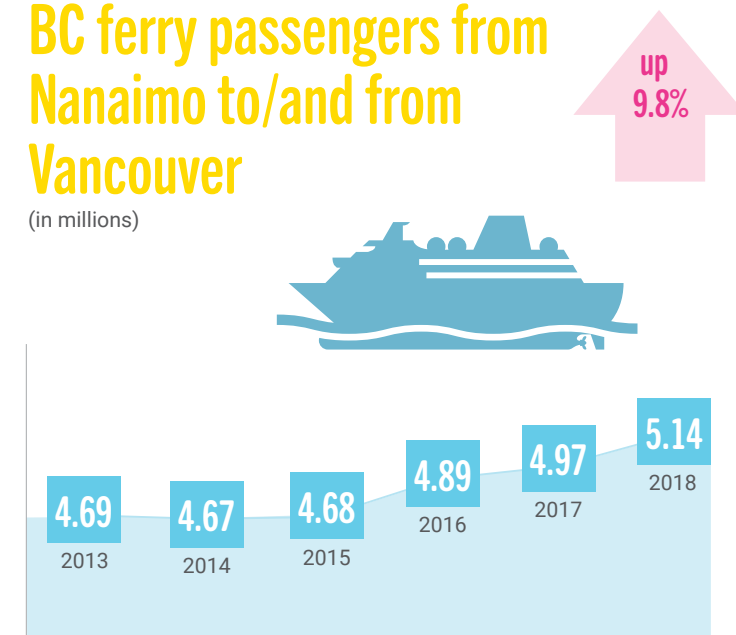
Mode of transportation change 2006 to 2016



During the 2016-2018 period, the City of Nanaimo installed 13.2 km of new bike routes and 9.8 km of new sidewalks.

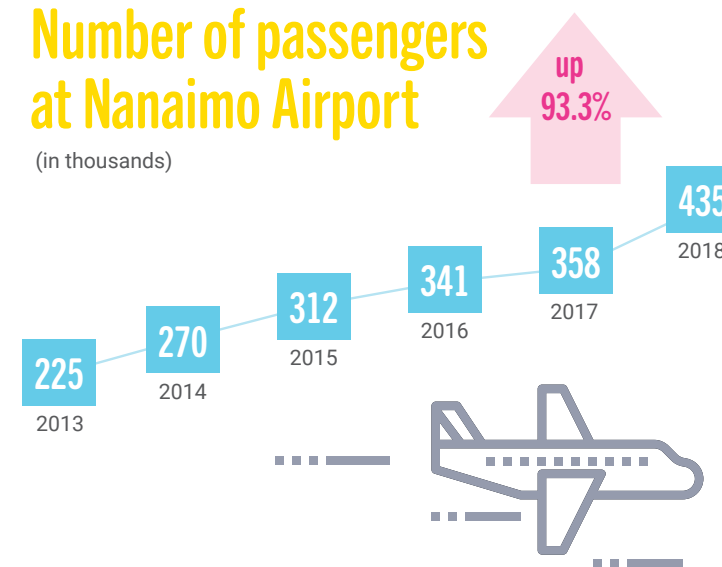
BC ferry passengers from Nanaimo to/and from Vancouver

(in millions)



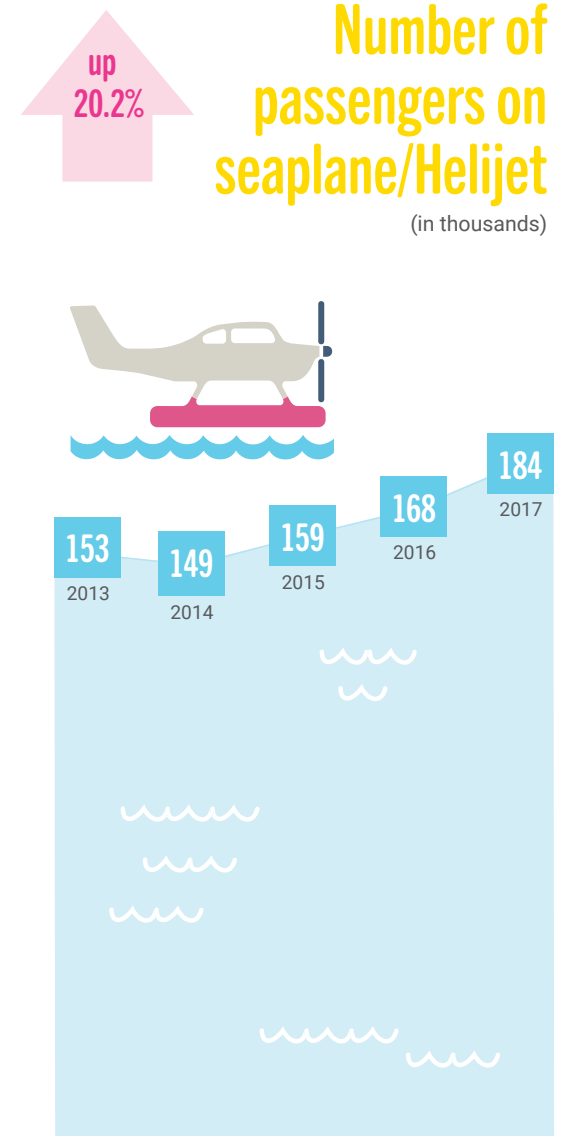
Number of passengers at Nanaimo Airport

(in thousands)



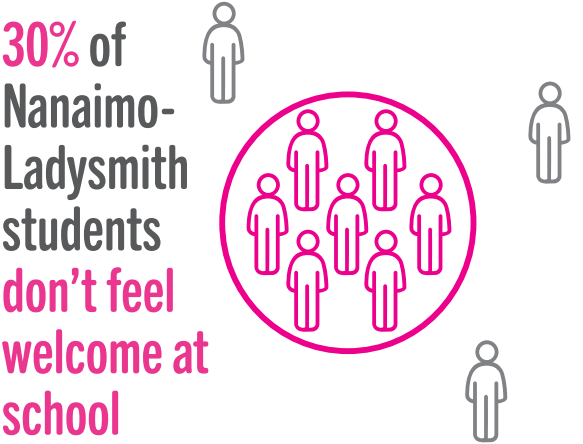
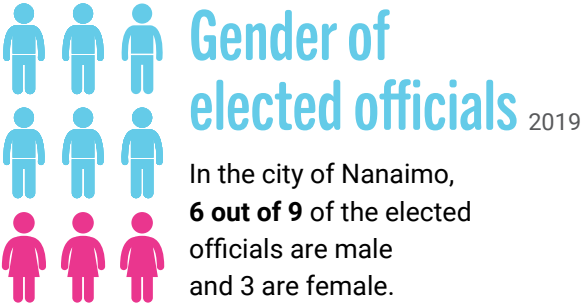
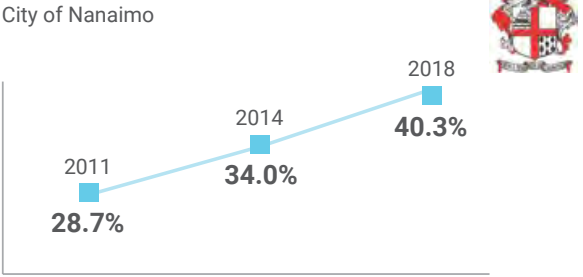
Number of passengers on seaplane/Helijet

(in thousands)

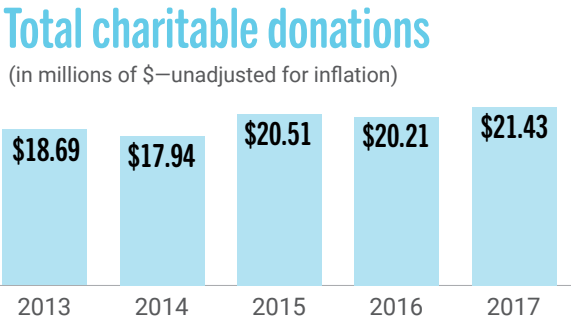
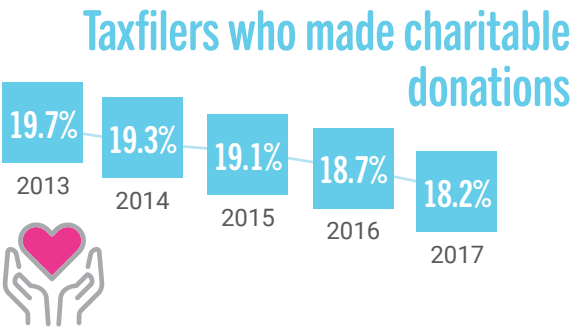
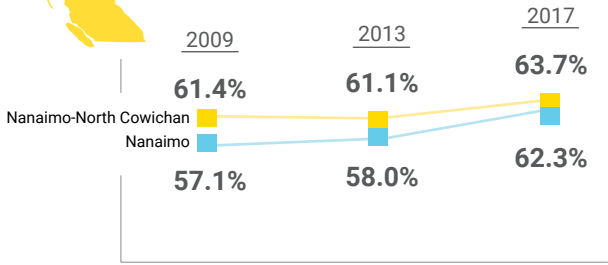


Belonging and Leadership

Registered voters who voted in municipal elections



Registered voters who voted in provincial elections



Presenting Sponsor IslandSavings

A DIVISION OF FIRST WEST CREDIT UNION

With branches from Victoria to Nanaimo to the Gulf Islands, Island Savings is a division of First West Credit Union, B.C.'s third largest credit union. We offer a complete range of products and services including banking, investment advice and lending for both personal and business members.

Our mission is to contribute to the financial and economic well-being of our members, employees, and communities, and we're committed to investing in local businesses and supporting community organizations in order to make the Islands an even better place to live, work and play.

In 2018, we invested more than \$721,000 in the communities we serve, including nearly 5,000 volunteer hours by our employees on their own time. Moreover, we're focused on making a meaningful difference in our communities. Through our signature cause program, The Full Cupboard, we've raised more than \$275,000 since 2016 in support of our local food banks on the Island.

Community Sponsors



For the past 60 years, United Way Central & Northern Vancouver Island (UWCNVI) has been bringing together passionate people to collaborate, find solutions, and fund effective programs to make true, lasting positive change. Every day, people in our Vancouver Island communities struggle to better their lives. Tackling serious social challenges isn't easy but by breaking down silos and working together we can more successfully address the concerns of our neighbours; Vital Signs is a key tool in knowing where to focus our efforts.

The Vital Signs report gives UWCNVI important insight into our community's strengths and highlights issues in need of attention. In turn, it guides how we invest our donor's dollars to best strengthen our community and create the greatest impact possible.

Please donate to your local United Way to make sure local, impactful, important social programs keep running in your community.



The City of Nanaimo is a vibrant and growing region centre, with a vision "to be a community that is livable, environmentally sustainable and full of opportunity for all generations and walks of life." Among the key objectives of Nanaimo City Council's 2019-2022 Strategic Plan is 'Liveability', which speaks to how we can make Nanaimo an inclusive, healthy and desirable place to live.

The City's support for the Nanaimo Foundation 2019 Vital Signs Report is part of our commitment to work with our partners to better understand our collective successes and challenges. Across the organization, City leadership and staff share the vision of creating a community with a healthy natural environment; a strong, sustainable economy and a high quality of life for everyone. We are thankful to the Nanaimo Foundation for taking the lead on this important research and look forward to continued work together in this place we are all so fortunate to call home.

Report Sponsors:



Special thanks to:

Natalie Sorenson for the 2019 Nanaimo Vital Signs graphic design



Photo credits: Nancy Shields Creative—cover and pages 1, 2, 3, 8, 15, 17

For more information:



205 – 75 Front Street
Nanaimo, B.C. V9R 5H9

250-667-4292
contact@nanaimofoundation.com
www.nanaimofoundation.com

IslandSavings

A DIVISION OF FIRST WEST CREDIT UNION

Keeping it Simple®

BUILDING STRONGER ISLAND COMMUNITIES TOGETHER

When you're part of a community, you work together. We are proud to once again partner with the Nanaimo Foundation to bring focus to the wellbeing of the community through the Vital Signs report. By working together to increase the quality of life for families on the Islands, we are building a brighter future for generations to come.



Visit islandsavings.ca/WhereYouBankMatters

Bank. Borrow. Insure. Invest.